

Heatavent flameproof heaters

the FXPH range



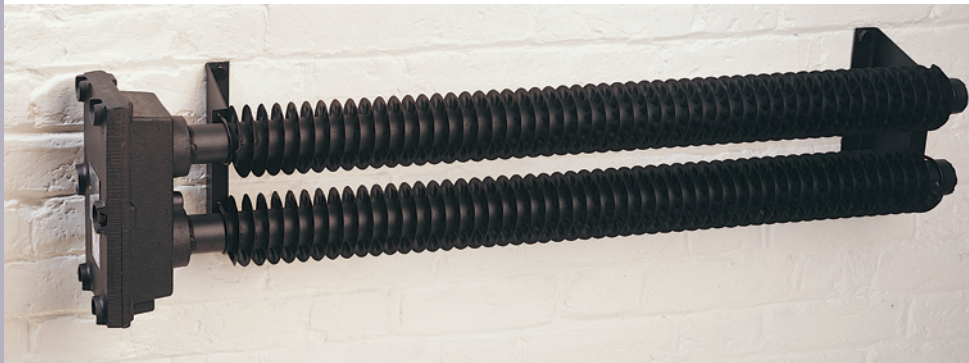
An ATEX certified range of flameproof heaters providing the ideal solution for safe heating in Zone 1 and Zone 2 areas exposed to explosion hazards.

Applications may include: oil and gas installations/ chemical works/petrochemical plants/aircraft hangers/ fuel servicing areas.

* Please note: This heater is NOT suitable for use in zone 0.



Model FXPH1



Model FXPH2

Range features

- Approved to ATEX Directive 94/9/EC for use in hazardous zones 1 and 2.
- 11G EEx d IIB T2 Protection.
- Steel tube with steel fins for maximum heat transfer.
- Terminal box welded to steel tube.
- Two supports for horizontal wall mounting.
- Removable heating element.
- Single or double tier models.
- Accessory guards available.

Technical Specifications

Type of Protection

II 2 G EEx d IIB T2.

Approvals

In accordance with ATEX Directive 94/9/EC: 1994
BS EN 50014: 1998
BS EN 50018: 2000
BASEEFA Certificate Nos.
03ATEX0431 – Single tier
03ATEX0432 – Double tier

IP Rating

IP44.

Cable Entry

Single 20mm tapped entry as standard.

Accessories

Wall mounted guards FXPH42G and FXPH60G are available for use with these heaters.

Definitions

EEx – Electrical Apparatus for potentially explosive atmospheres.

d – Flameproof enclosure ‘d’ (EN50018:2000).

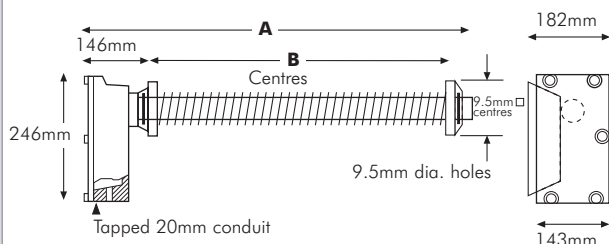
IIB – For industries other than mines where explosive atmospheres caused by gases, and vapour are likely to occur, and where the source of the explosive atmosphere is covered by classification ‘B’.

T2 – Ignition temperature >300 deg°C

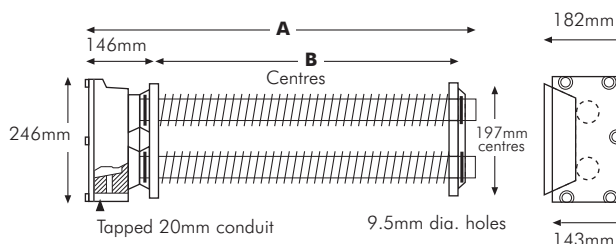
The surface temperature of any equipment installed must be below the lowest ignition temperature of the explosive gas/gases or vapour mixture present.

II 2 G – Non-mining applications, Group II, Category 2 for use in gas/vapour/mist atmosphere.

FXPH1 Dimensions



FXPH2 Dimensions



Model No.	Loading	Voltage	A	B	Weight	Temp.
FXPH1/42/750	0.75kW	240V	1067mm	870mm	14.7kg	T2
FXPH1/60/1000	1.0kW	240V	1524mm	1327mm	16.4kg	T2

Model No.	Loading	Voltage	A	B	Weight	Temp.
FXPH2/42/1500	1.5kW	240V	1067mm	870mm	20.3kg	T2
FXPH2/60/2000	2.0kW	240V	1524mm	1327mm	23.6kg	T2