

# Lo-Carbon HR25 Solo<sup>®</sup> Plus Single Room Heat Recovery Unit



## Features and Benefits

- Reduces your carbon footprint.
- 84% temperature based heat recovery.
- Up to 90% energy saving.
- Meets the Building Regulation for domestic bathrooms and toilets and as a wholehouse system when used in all wet areas.
- Controls condensation and eliminates mould.

## Through The Wall Mounted Heat Recovery Unit

The Vent-Axia Lo-Carbon HR25 Solo Plus through the wall heat recovery units are suitable for fitting through a 152mm (6") circular hole and are designed for use in bathrooms, toilets and utility areas. Under the new **Building Regulations Document F** continuous running products, such as the Lo-Carbon HR25 Solo Plus installed in all wet areas of a dwelling are classed as a wholehouse ventilation system and therefore, only needs to move the amount of air as laid down in table 1.1b of Document F.

The Vent-Axia Lo-Carbon HR25 Solo Plus is available with pullcord control.

## Long Life DC Motor

The units are fitted with a 24V DC motor and are supplied with a state of the art Switch Mode Power Supply (S.M.P.S.) This has the ability to operate at only 2 Watts power consumption on normal setting, offering a 90% energy saving over conventional AC equivalents. A 5m cable is provided for fixed wiring of the unit to the S.M.P.S.

## Typical Installation

The Lo-Carbon HR25 Solo Plus P (Pullcord) unit is designed for installation in a 152mm (6") core drilled hole. All installation can be carried out from inside the building. The units are suitable for external walls up to 310mm thick.

## Maintenance

Apart from removing odours, providing fresh air and recovering heat, this appliance extracts airborne impurities such as dust, dirt and grease. These gradually build up and detract from the efficiency and appearance of the appliance. To ensure peak performance, the appliance, including the filters and heat exchanger should be cleaned every 6 months in accordance with the instructions supplied.

## Model

### Lo-Carbon HR25 Solo Plus P

The HR25 Solo Plus P is fitted with a pullcord switch which operates the twin speed control function.

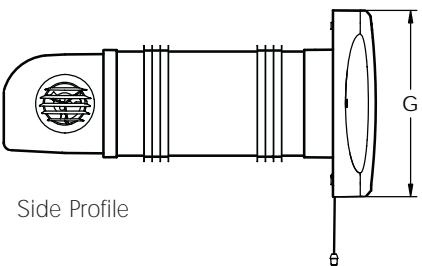
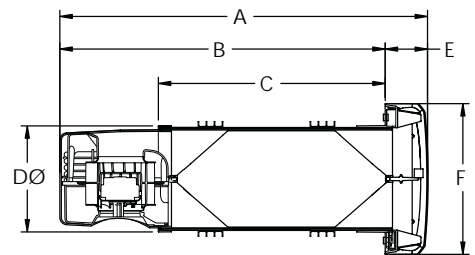
**Stock Ref**  
**434036**

## Dimensions (mm)

A	B	C	DØ	E	F	G
505	447	327	147	58	208	253

Weight 3kg

Top Profile



Side Profile

Fixing hole Ø 152mm

## Performance

Model	Extract Performance m <sup>3</sup> /h		Intake Performance m <sup>3</sup> /h		Watts		Sound dB(A) @ 3m*	
	Boost	Trickle	Boost	Trickle	Boost	Trickle	Boost	Trickle
Lo-Carbon HR25 Solo Plus P	40	12	44	5	23	2	49.2	16.8

\*Active band frequency range of 250Hz to 4KHz at 3m. Unit mounted on a reflective surface.