



Features and Benefits

- Fitted with four extract 125 or 100mm diameter spigots allowing quick connection to ducts.
- LoWatt Energy Saving version available.
- Option of wall, ceiling and loft mounting.
- Quiet operation suitable for continuous operation.
- No cross contamination due to continuous running.
- Can extract from a number of rooms, depending on the dwelling.
- Integral humidity sensor or Wire-less Controller available.

Model	Stock Ref:
MV250	18 15 10A
MV350	18 10 10A
MV250H	18 30 10A
MV350H	18 30 15A
LoWatt Energy Saving	
MVDCH	18 20 20A
Multivent Wire-less Controller	42 60 35

The Multivent continuous mechanical extract ventilation range is designed for the simultaneous ventilation of separate areas in the home or as a multi-point extractor system for a wide range of commercial applications.

In the home the system is usually located in the loft or airing cupboard with ducts taken to the bathroom, kitchen and utility room to remove water vapour at source and from WC's to remove odours. Designed to provide 0.7 of an air change based on the volume of the building, the Multivent system provides adequate ventilation, even in a 'tight' dwelling. Pollutant concentrations and humidity can be controlled.

The Multivent H versions are now available with 2 control options. An integral humidity sensor that will detect any rise in humidity within the system and will boost between any 2 of the 3 speeds. A new Wire-less Controller is available for use with the Multivent H with 3 speed options offering total control of the systems.

Multivent MV250 and MV350 are guaranteed for 2 years with an extended motor guarantee to 5 years offered on the MVDC LoWatt Energy Saving model.

Installation

Multivent is ideal for a range of commercial multipoint extract applications such as WC's, fitting rooms, and kiosk's. The units can be installed at any angle and where the ambient air has a high humidity content condensate drains are provided.



Typical Specification

Supply and install a Multivent Wholehouse Central Extract unit as manufactured by Vent-Axia Clean Air Systems, Fleming Way, Crawley, West Sussex, RH10 9YX, Telephone: 01293 441520.

Performance:	m ³ /h	l/s
Maximum ventilation rate		
MV 250	443	123.06
MV 350	473	131.39
MVDCH	434	120.56
N° speed settings	3	

Motor: The AC version should be a capacitor run external rotor motor capable of 3 fixed speeds. 240V 50Hz A/C with ball race bearings, greased for life. It shall operate up to an ambient temperature of 40°C and be fitted with a one shot thermal overload protective device.

The DC version should be an efficient brushless LoWatt Energy Saving DC motor with ball race bearings.

Fan: The impeller should be a centrifugal backward curved type, dynamically balanced mounted directly onto the motor.

Controls: Refer to page 37.

Ducting spigots: The unit should have 4-N° 100/125mm Ø extract points and 1x125mm outlet to atmosphere. (Can be converted to flat ducting).

Filter: not fitted.

Condensation: Two 15mm condensate drain outlets on the side of the unit at both the top and the bottom for different mounting positions.

Construction: The unit should be moulded in ABS plastic.

Sound Levels: Refer to page 37.

Mains electrical supply: 230VAC 50Hz.

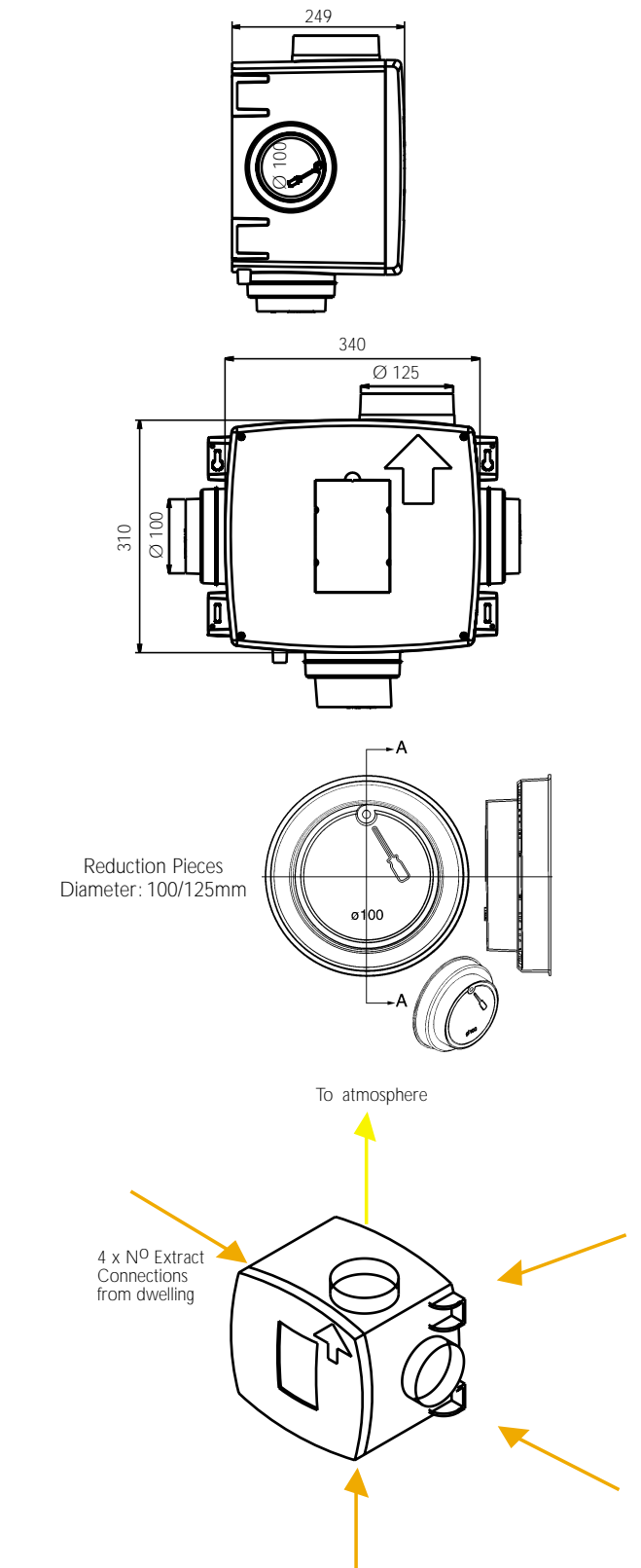
Power Consumption Refer to page 37.

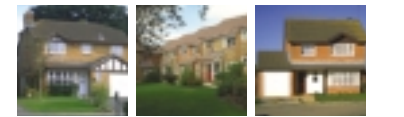
Complies to the following approvals/ directives:

LVD, EMC, BEAB and CE.

Dimensions (mm)

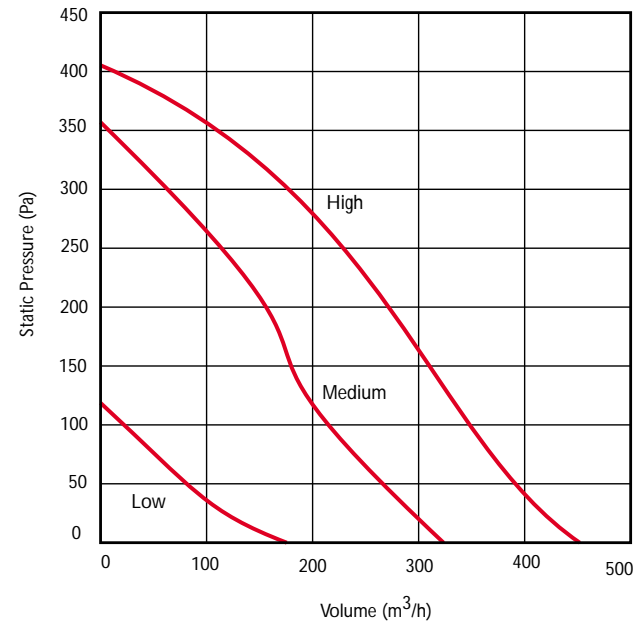
Weight: 5.50kg



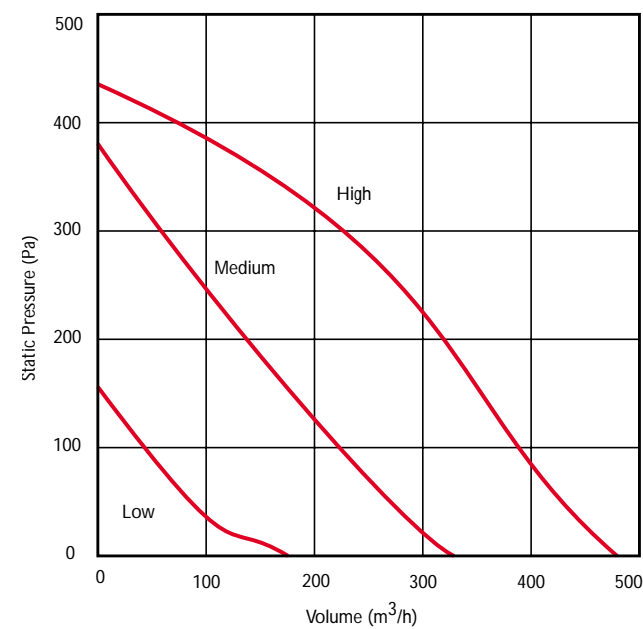


Performance

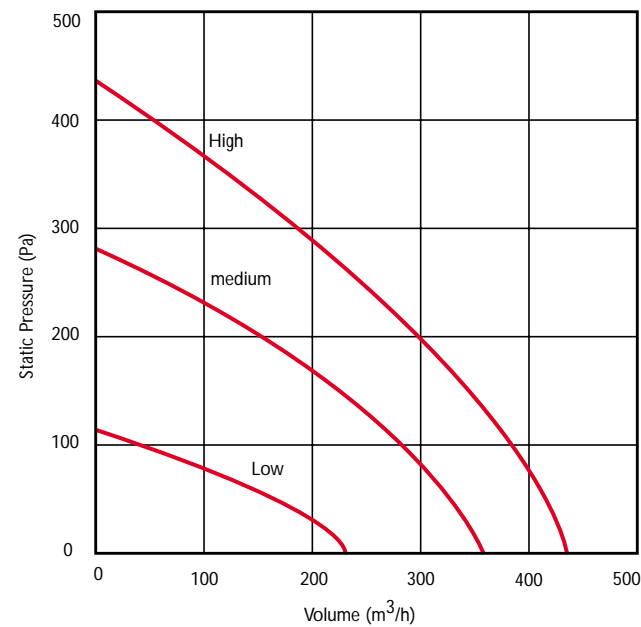
MV250 & MV250H



MV350 & MV350H



MVDCH LoWatt Energy Saving Model



Sound Levels

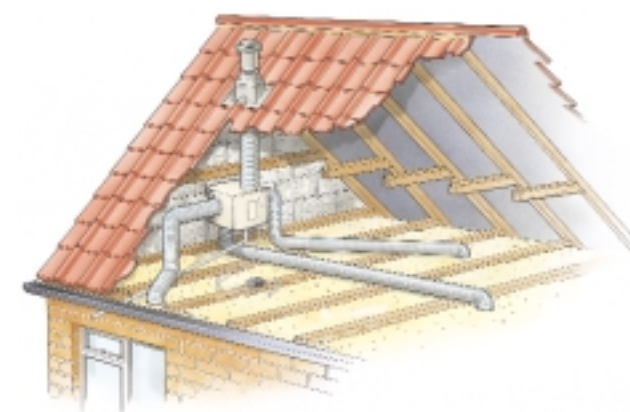
	FID Performance m³/h	dB(A) @ 3m		
		Casing Breakout	Duct Inlet 100mm ø	Duct Inlet 125mm ø
MV 250				
low	161	22.4	27.9	27.8
medium	305	31.0	42.9	43.2
high	443	35.4	48.6	48.0
MV250H				
low	175	22.4	27.9	27.6
medium	344	31.0	42.9	43.2
high	443	35.4	48.6	48.0
MV 350				
low	173	21.3	26.7	27.6
medium	317	30.8	39.9	41.2
high	473	37.0	49.3	51.5
MV350H				
low	173	21.3	26.7	27.6
medium	317	30.8	39.9	41.2
high	473	37.0	49.3	51.5
MVDCH				
low	232	33.3	36.3	36.5
medium	365	33.7	47.9	47.0
high	434	38.8	51.7	51.5

Published dB(A) figures are free field sound levels at 3m with spherical propagation at a reference level of 2 x 10⁻⁵ Pa. The free field sound power level spectra figures are dB with reference of 10-12 Watts.

Technical Data

	Settings					
	Low		Medium		High	
	Current Amps	Power Watts	Current Amps	Power Watts	Current Amps	Power Watts
MV250	0.2	25	0.30	54	0.34	81
MV250H	0.2	25	0.30	54	0.34	81
MV350	0.3	29	0.39	55	0.42	99
MV350H	0.3	29	0.39	55	0.42	99
MVDCH	0.1	13	0.23	35	0.39	44

Typical Installation



Multivent Installation Packs

Accessory kits for Multivent installations including flexible duct, grilles, diffusers etc.

- 2 point Extract kit. - Stock Ref. No. 45 52 25
- 3 point Extract kit. - Stock Ref. No. 45 52 24
- 4 point Extract kit. - Stock Ref. No. 45 52 23

Controllers & Sensors

Controller Options					
Trickle Boost Switch	Switch with Neon	Ambient Response Humidistat	Visionex PIR	TIM2	7 Day Timeswitch
45 52 13	45 97 46	56 35 50	45 96 23	37 03 46	56 35 15

For further details on controls & sensors please refer to pages 98-102. For accessories details, please refer to pages 103-105.

For wiring diagrams details please refer to page 124.