

CENTRIFUGAL CANOPY EXTRACTOR FAN SUITABLE FOR DUCTED INSTALLATION

VORT KAPPA



- For use when ventilating over a cooker in the kitchen.
- Automatic backdraught shutter to avoid back flow when unit is turned off.
- Two speeds.
- IMQ information label certifies third party product data and performance.
- Metal body and motor-holder. Heat-resistant.
- Vort Kappa conforms to CEI EN 60335-2-80 (Part 2: Particular requirements for fans), CEI EN 635-2-31, regarding kitchen hood safety.
- Quick and easy installation and maintenance.

Design: F. Trabucco and M. Vecchi

Accessories

(description and data on page 91)

- Fixed grille (code 22010)
- Gravity grille (code 22300-22140).
- SCNR (code 12912 * Upon stock depletion) and SCNRB (code 12971) electronic speed controllers.
- SCB Kit (code 22481).

Spare parts

- Metallic anti-dust filter (code 1193000002).

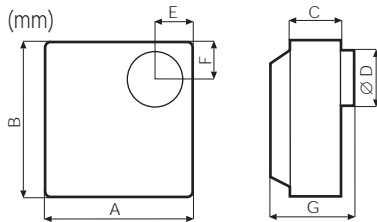
Wiring diagrams shown on page XXX.



- ① Installation above cooker (minimum distance 80 cm. from direct heat).
- ② Underhung installation.
- ③ Filter on the frame, consists of a double layer of micromesh and stretched aluminium sheet that is easily removed and washed in a dishwasher.

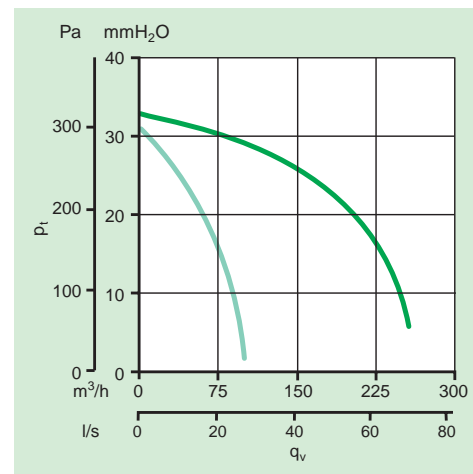
Supply and install a Vort Kappa centrifugal extract fan with integral backdraught shutter for installation over cookers as manufactured exclusively by Vortice only for Vortice. The fan should have two-speed motor and have an extract performance, on maximum, of 72.2 l/s in free air and be able to comply with the requirements of the Building Regulations (Document F) for kitchens. The requirements are 60 l/s for Kitchens but only 30 l/s when placed above the cooker. All performance data should be third party IMQ (BEAB recognised equivalent) verified. The fan body and motor holder should be class 1 insulated and manufactured from heat resistant metal. It should be fitted with a washable metallic filter, which is housed in an easily removable frame. The motor should include a thermal cut out device and be speed controllable (using an optional controller).




Dimensions (mm)



	A	B	C	∅ D	E	F	G
Vort Kappa	252	270	90	97	65	65	145

Pressure/performance curve



Product	Code	V ~ 50 Hz	W		A		Rpm		Delivery		P max		Lp dB (A) 3m		Approvals	kg	Insulation
			min	max	min	max	min	max	min	max	min	max					
 Vort Kappa	10950	220-240	30	90	0.29	0.44	850	1950	100 ⁽¹⁾ 27.4 ⁽²⁾	260 ⁽¹⁾ 72.2 ⁽²⁾	31 ⁽³⁾ 304 ⁽⁴⁾	33 ⁽³⁾ 324 ⁽⁴⁾	35.8	55.3		3.6	 cl.I

⁽¹⁾ m³/h - ⁽²⁾ l/s - ⁽³⁾ mm H₂O - ⁽⁴⁾ Pa