

Xpelair AutoFlow

Passive air-input units



Key features

Type:	Passive ventilation
Application:	All rooms
Control options:	Thermostatic
Legislation:	Building Regulations Part F1
Hole diameter:	85mm (AutoFlow 80) 105mm (AutoFlow 100) 165mm (AutoFlow 160)

The Range

Building refurbishment with replacement double glazing can often lead to condensation problems if there is inadequate ventilation. With central systems, be it central extract using multipoint system or a positive pressure system, it is often now necessary to provide passive ventilators in tight rooms. Introducing Xpelair **AutoFlow**, a simple and neat passive ventilation unit designed for installation at high level through a wall using a core cutter. Xpelair **AutoFlow** is self regulating and adjusts the airflow in relation to the outside temperature.

A self contained, temperature sensitive thermostatic piston controls the opening of the indoor vent disc. In automatic operation the aperture decreases with declining outdoor temperature and increase with rising outdoor temperature.

The unit comes complete with wall tube and outside weather protected wall grille.

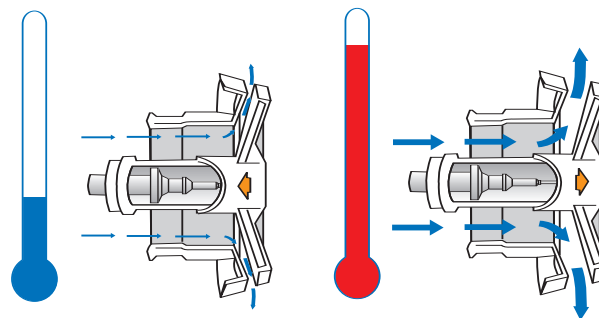


Diagram showing how AutoFlow opens with increasing temperature

Select the right product for your application

	AutoFlow 80	AutoFlow 100	AutoFlow 160
Reference number	91295AW	91296AW	91297AW
Operating temperature range (°C)	-5/+10	-5/+10	-5/+10
Maximum vent opening (mm)	15	15	15
Maximum ventilation rate (m ³ /h)	100	100	200
Pressure drop at max flow rate (Pa)	38	36	37
Diameter (mm)	80	100	160
Hole diameter (mm)	85	105	165
Guarantee (years, UK)	2	2	2

Models

AutoFlow 80

Ref. 91295AW

- Self regulating passive 80mm ventilator that adjusts airflow with outside temperature
- Building Regulations compliant
- Maintenance free temperature sensitive actuating piston
- Range -5°C to $+10^{\circ}\text{C}$
- Fitted using a standard core cutter
- ABS front face with sound attenuating insulation to the reverse side
- Telescopic wall tube for walls to 270mm
- Outside weather protected wall grille
- Finish in white

AutoFlow 100

Ref. 91296AW

- Self regulating passive 100mm ventilator that adjusts airflow with outside temperature
- Building Regulations compliant
- Maintenance free temperature sensitive actuating piston
- Range -5°C to $+10^{\circ}\text{C}$
- Fitted using a standard core cutter
- ABS front face with sound attenuating insulation to the reverse side
- Telescopic wall tube for walls to 270mm
- Outside weather protected wall grille
- Finish in white

AutoFlow 160

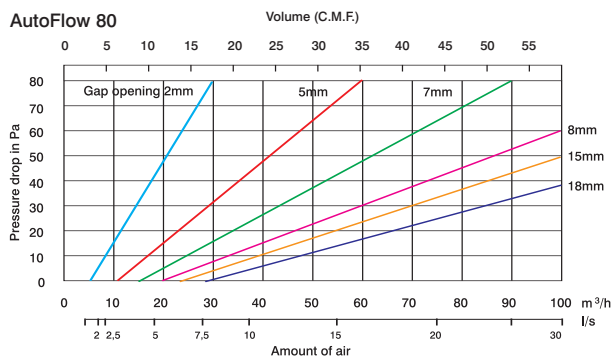
Ref. 91297AW

- Self regulating passive 160mm ventilator that adjusts airflow with outside temperature
- Building Regulations compliant
- Maintenance free temperature sensitive actuating piston
- Range -5°C to $+10^{\circ}\text{C}$
- Fitted using a standard core cutter
- ABS front face with sound attenuating insulation to the reverse side
- Telescopic wall tube for walls to 270mm
- Outside weather protected wall grille
- Finish in white

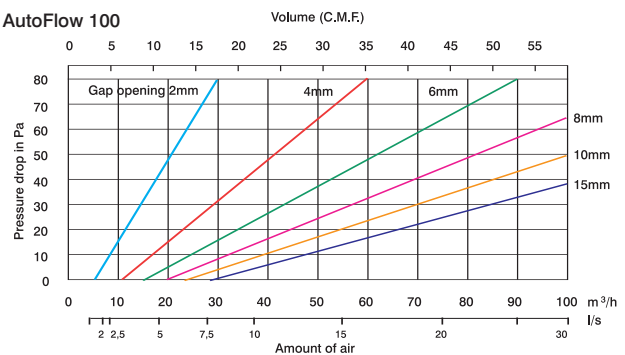
Typical Specifications on page 169.

Performance

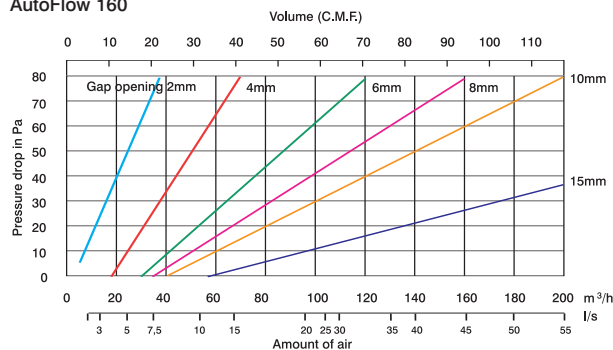
AutoFlow 80



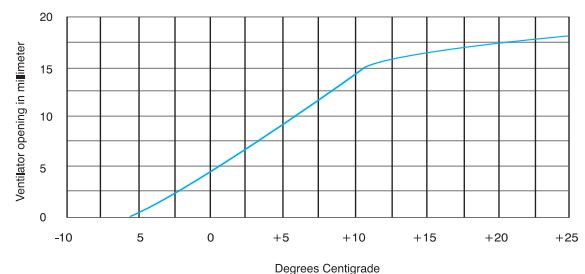
AutoFlow 100



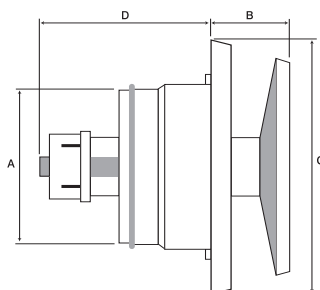
AutoFlow 160



Thermostat bulb operation



Dimensions (mm)



Model	Dimensions (mm)			
	A	B	C	D
AutoFlow 80	80	40	147	75
AutoFlow 100	95	40	147	75
AutoFlow 160	157	47	207	75