

Xpelair BriteX LoVolt & BriteX Turbo

Shower fan and light systems



Key features

Type: **Inline single speed axial / mixed flow extract fan systems**

Application: **Domestic toilets, bathrooms & shower rooms**

Control options: **Standard or timer**

Legislation: **Conforms to Building Regulations Part F1**

Hole diameter: **102mm**



The Range

Brighten up your showering experience.

Shut the door on your shower and you are probably standing in the darkest part of your bathroom. Xpelair **BriteX** range is designed to extract condensation laden air directly from above the shower whilst bathing the cubicle in warm light.

Xpelair **BriteX** kits include everything needed for a standard installation including a stylish ceiling inlet complete with bezel and 12V 35W sealed dichroic lamp, an inline extract fan, 12V Safety Extra Low Voltage (SELV) transformer, flexible ducting, duct ties and a soffit/wall grille. The kits are available in a choice of white or chrome bezel.

BriteX LoVolt is suitable for shorter duct runs (3m duct supplied) in shower cubicles, bathrooms and toilets. For larger shower rooms and longer ducts choose **BriteX Turbo** which comes complete with 6 meters of flexible ducting. For bathrooms without windows versions with an adjustable timer overrun are available, adjustable from 1-20 minutes. The fan is typically connected to the bathroom lighting, and it continues to run after the light has been switched off.

The motor housing is made from ABS and has a detachable mounting foot. All **BriteX** systems can be installed in zone 1 in accordance with IEE Regulations 16th Edition. All versions are IPX4 rated and suitable for use with a supply voltage of 220-240V 50Hz. The fan motor is sealed for life maintenance free and is fitted with safety thermal overload protection.

Select the right product for your application

	Axial				Mixed flow			
	BX100W	BX100WT	BX100C	BX100CT	BX100+W	BX100+WT	BX100+C	BX100+CT
Reference number	92276AW	92277AW	92278AW	92279AW	91248AW	91250AW	91249AW	91251AW
Performance	standard	standard	standard	standard	turbo	turbo	turbo	turbo
Remote switch (supplied separately)	■	■	■	■	■	■	■	■
Lamp (12V 35W)	LoVolt	LoVolt	LoVolt	LoVolt	LoVolt	LoVolt	LoVolt	LoVolt
Integral timer (adjustable from 1-20 mins)		■		■		■		■
Extract performance (m ³ /h)	58	58	58	58	74	74	74	74
Extract Performance (l/s)	16	16	16	16	21	21	21	21
Duct length (supplied)	3m	3m	3m	3m	6m	6m	6m	6m
Sound pressure level (dB(A)@3m)	36	36	36	36	55	55	55	55
Fan electrical power rating (W)	30	30	30	30	25	25	25	25
Hole diameter (mm)	102	102	102	102	102	102	102	102
IP rating	IPX4	IPX4	IPX4	IPX4	IPX4	IPX4	IPX4	IPX4
Colour	white	white	chrome	chrome	white	white	chrome	chrome
Weight (kg)	0.5	0.5	0.5	0.5	2.1	2.1	2.1	2.1
Guarantee (years, UK)	3	3	3	3	2	2	2	2

Models

BriteX LoVolt

BX100W white bezel

Ref. 92276AW

BX100C chrome bezel

Ref. 92278AW

- Suitable for shower cubicles, bathrooms and toilets
- 3m of flexible ducting
- Stylish SELV rated air inlet with 35W sealed dichroic lamp
- SELV transformer
- IPX4 rated double insulated fan
- ABS housing with detachable mounting foot
- Sealed for life maintenance free motor
- Safety thermal overload protection
- Duct ties
- Soffit/wall grille colour brown

BriteX LoVolt T

BX100WT white bezel

Ref. 92277AW

BX100CT chrome bezel

Ref. 92279AW

- 3m of flexible ducting
- Fan fitted with overrun timer adjustable from 1-20mins
- Fan is typically connected to the bathroom lighting. Fan continues to run after the light has been switched off

- Suitable for shower cubicles, bathrooms and toilets
- Stylish SELV rated air inlet with 50W sealed dichroic lamp
- SELV transformer
- IPX4 rated double insulated fan. ABS housing with detachable mounting foot
- Sealed for life maintenance free motor
- Safety thermal overload protection
- Duct ties
- Soffit / wall grille colour brown

BriteX Turbo

BX100+W white bezel

Ref. 91248AW

BX100+C chrome bezel

Ref. 91249AW

- Suitable for longer duct runs and larger bathrooms
- 6m of flexible ducting
- Stylish SELV rated air inlet with 35W sealed dichroic lamp
- SELV transformer
- IPX4 rated double insulated mixed flow inline fan. ABS housing with detachable mounting foot
- Sealed for life maintenance free motor
- Safety thermal overload protection
- Duct ties
- Soffit/wall grille colour brown

BriteX Turbo T

BX100+WT white bezel

Ref. 91250AW

BX100+CT chrome bezel

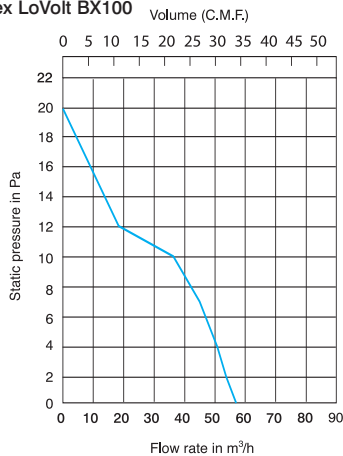
Ref. 91251AW

- Fan fitted with overrun timer adjustable from 3-15mins
- 6m of flexible ducting
- Fan typically connected to the bathroom lighting. Fan continues to run after the light has been switched Off
- Stylish SELV rated air inlet with 35W sealed dichroic lamp
- SELV transformer
- IPX4 rated double insulated mixed flow inline fan.
- ABS housing with detachable mounting foot
- Sealed for life maintenance free motor
- Safety thermal overload protection
- Duct ties
- Soffit / wall grille colour brown

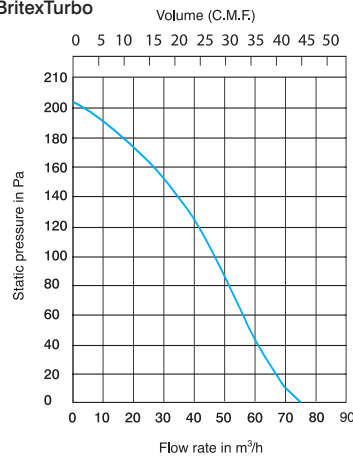
Typical Specifications on page 163.
Wiring Diagrams on page 182.

Performance

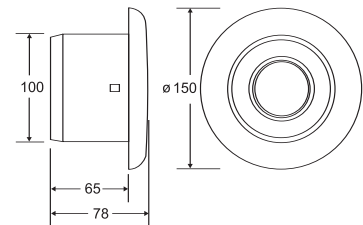
Britex LoVolt BX100



BritexTurbo

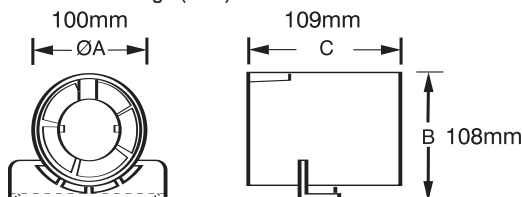


SELV Ceiling Bezel

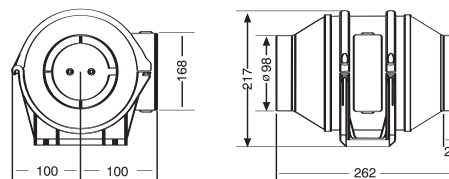


Dimensions (mm)

BriteX LoVolt Range (axial)

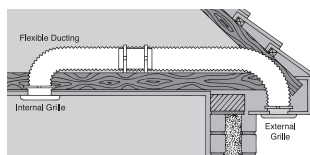


BriteX Turbo Range (mixed flow)



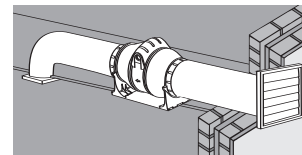
Installation

BriteX units can be installed with the inlet located in Zone 1 of a bath or shower in accordance with IEE regulations. The inlet bezel/light assembly fits flush to the ceiling. The fan is installed at the highest point in the duct run using the bracket provided to avoid a possible build up of condensation in the duct. It is good practice to cut off any surplus duct. Extended duct and radiused bends improve performance. The grille provided can be installed in the soffit of the roof or in a gable end wall.



Britex LoVolt Installation

Hole diameter: 102mm
Ducting size: 100mm



Britex Turbo Installation

Hole diameter: 102mm
Ducting size: 100mm