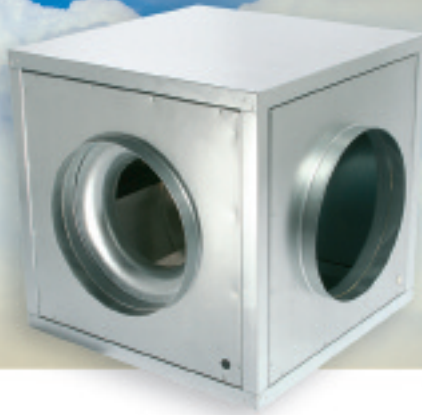


Xpelair CubeX CMAX CBXC

Versatile attenuated inline fans



Key features

Type: **Versatile attenuated inline**

Application: **Commercial/Industrial**

Control options: **Speed control and humidity/PIR sensing**



The Range

Where higher general ventilation duties are required the new Xpelair **CubeX** range provides a flexible solution designed with a choice of duct sizes.

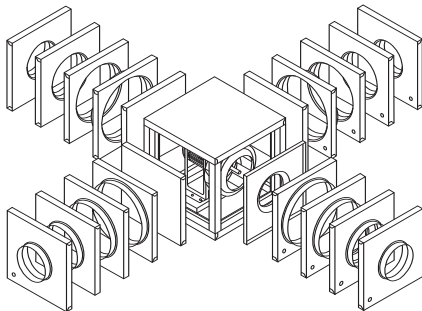
Installed in offices, commercial buildings, public areas, the leisure industry and industrial applications.

Xpelair **CubeX** models combine high performance backward curved centrifugal inline fans with sound attenuation and robust steel housings.

Each model is available with a choice of two spigot sizes to suit duct design.

The range is available in four sizes with a choice of two spigot sizes for each ranging from 315mm to 450mm.

A full range of Xpelair ventilation accessories is available.



CubeX spigot options

Models

- Backward curved centrifugal impeller and external rotor motor assembly with maintenance free long life bearings
- Thermal contacts connected to terminals
- Full motor protection through external tripping device
- Rigid frameless sheet metal construction
- Galvanised double skin casing with 40mm insulation
- Includes condensation drain facility
- 220- 240V single phase

Select the right product for your application

	CBXC280S315	CBXC280S355	CBXC315S315	CBXC315S355	CBXC355S315	CBXC355S355	CBXC400S400	CBXC400S450
Reference number	91508AA	91509AA	91510AA	91512AA	91513AA	91514AA	91515AA	91516AA
Spigot size (mm)	315	355	315	355	315	355	400	450
Extract performance (m ³ /s)	0.70	0.74	0.98	1.01	0.65	0.68	1.11	1.13
Sound pressure level (dB(A)@3m)	58	58	64	64	51	51	55	55
Max electrical power rating (W)	660	680	950	920	280	280	570	560
Electrical current SC (A)	3.5	4.0	4.9	4.8	1.4	1.4	3.2	3.2
Electrical current FLC (dB(A)@3m)	3.2	3.3	4.2	4.1	1.3	1.3	3.0	3.1
(dB(A)@3m)	43	43	n/a	n/a	n/a	n/a	n/a	n/a
5 step transformer speed controller	91369AA	91369AA	91369AA	91369AA	91367AA	91367AA	91368AA	91368AA
Guarantee (years)	2	2	2	2	2	2	2	2
Insulation Class F	■	■	■	■	■	■	■	■

Controllers

5 Step Transformer Speed Controller

- Multi-tapped auto transformer giving 5 speeds allowing accurate adjustment to suit site conditions
- Provides five speed and On/Off function
- Robust ISO casing
- IPX4 protected



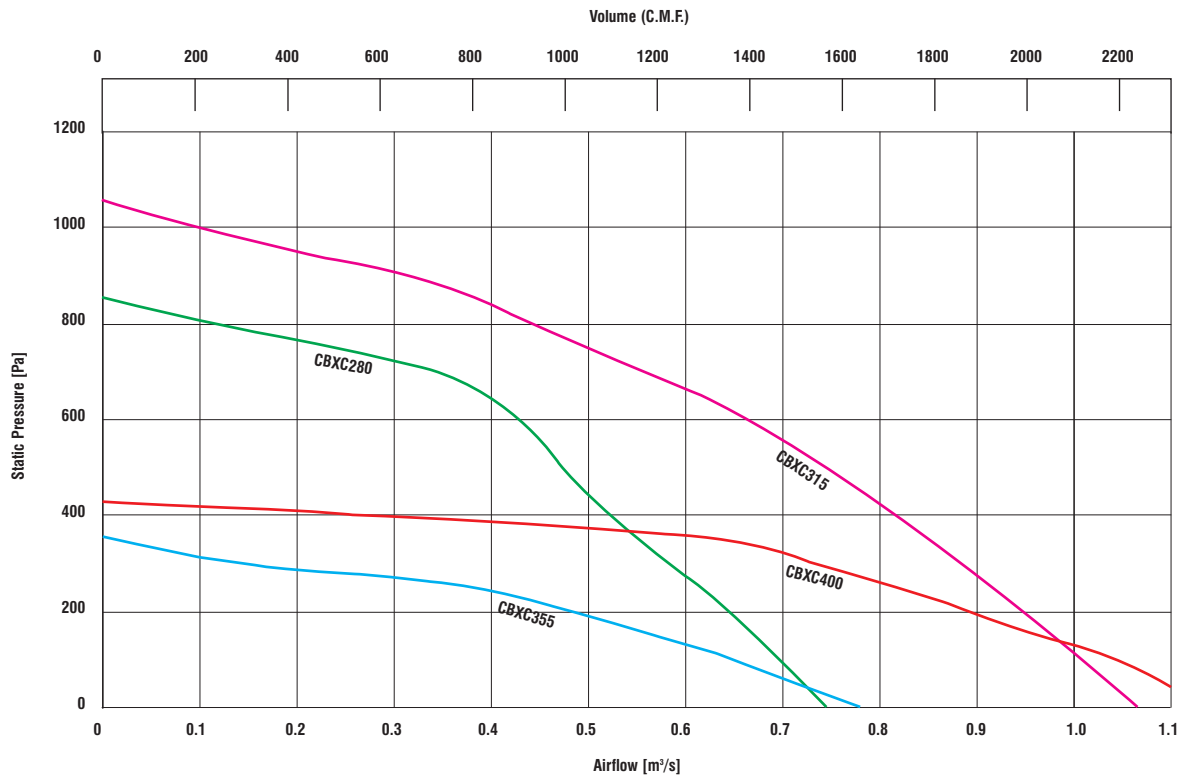
Installation and Accessories

An extensive range of accessories are available to complete the installation of the Xpelair CubeX CMAX Range of inline centrifugal fans.

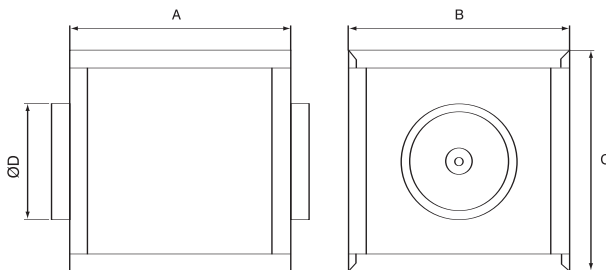
- Solid duct fastener XMK
- Backdraft shutter XBD
- Filterbox CFC
- Xflex ALU

Typical Specifications on page 178.
Remote Sensors on page 154.
Full Range of Ancillaries on pages 158-159.

Performance



Dimensions (mm)



Model	Dimensions (mm)			
	A	B	C	ØD
CBXC280S315	500	500	500	315
CBXC280S355	500	500	500	355
CBXC315S315	500	500	500	315
CBXC315S355	500	500	500	355
CBXC355S315	500	500	500	315
CBXC355S355	500	500	500	355
CBXC400S400	700	700	700	400
CBXC400S450	700	700	700	450