

# Xpelair Premier LoVolt LVDX200 & LVCF20

## Safety Extra Low Voltage ventilation



LVDX200

LVCF20

### Key features

Application: **Domestic bathrooms, shower rooms, toilets and utility rooms**

Control options: **Pullcord, timer & humidistat**

Legislation: **Conforms to Building Regulations Part F1**

Hole diameter: **117mm (wall/ceiling)  
120mm (window)**



### Select the right product for your application

	LVDX200	LVDX200T	LVCF20	LVCF20T
Reference number	91453AW	91040AW	91041AW	91042AW
Remote switch (not supplied)	■	■	■	■
Integral pullcord			■	■
Integral adjustable run-on timer (30s to 20mins)		■		■
Humidity sensor (50-90% RH)			■	■
Quick visit (2 minutes)		■		■
Speeds	2	2	5	5
Trickle ventilation facility			■	■
Extract performance (FID, m³/h)				
boost			108	108
speed 3			102	102
speed 2	108	108	79	79
speed 1	45	45	50	50
trickle			36	36
Extract performance (FID, l/s)				
boost			30	30
speed 3			28	28
speed 2	30	30	22	22
speed 1	12.5	12.5	14	14
trickle			10	10
Sound pressure level (dB(A)@3m)				
boost			50	50
speed 3			48	48
speed 2	50	50	42	42
speed 1	30	30	32	32
trickle			26	26
Max. electrical power rating (W)	42	42	42	42
IP rating	IPX5	IPX5	IPX5	IPX5
Weight (kg)	2.15	2.15	2.15	2.15
Guarantee (years, UK)	3	3	3	3

### The Range

Splash about with complete peace of mind. The Safety Extra Low Voltage (SELV) versions of the Premier DX200 and CF20 pressure developing centrifugal fans are ideal for use in shower rooms, bathrooms with showers and other zone 1 and zone 2 wet areas. The SELV system consists of a 12V fan unit which can be safely installed in the spray area of a bath or shower, with the transformer located outside the spray area.

Premier models LVDX200 & LVCF20 conform to Building Regulations covering mechanical ventilation for toilets, bathrooms and utility rooms. Importantly they exceed the IP requirements for zone 1 and zone 2 as defined by IEE Wiring Regulations (16th Edition) BS 7671:2001, and are rated IPX5. The motor is totally enclosed and fitted with self aligning bearings and thermal overload protection. The motor insulation is

Class B making them suitable for ambient temperatures up to 40°C.

Premier SELV fans have the same clean and sleek styling as the rest of the Premier range, with a white gloss body and fascia. They are designed for easy installation in walls, ceilings, windows or ducted installation at any angle, and LVCF20 models come complete with a brown 100mm grille for wall or soffit fixing. All models come complete with a universal mounting kit and an automatic backdraught shutter.

The two part casing permits recessed or surface mounting, and can be fitted into ceilings and studwork wall recesses as little as 50mm deep using the top entry knockout provided and an FDA adaptor and Profile 29 flat duct. Alternatively 100mm diameter circular duct can be used. A clip-off front and removable fan blade make for easy cleaning.

## Models

### Premier LVDX200

Ref. 91453AW

- High performance centrifugal unit
- Stylish 2 piece fascia with neon indicator
- Choice of 2 set speeds
- Operated by remote switch eg. lighting circuit

### Premier LVDX200T

Ref. 91040AW

- High performance centrifugal unit with timer
- Stylish 2 piece fascia
- Operated by remote switch eg. lighting circuit
- 'QuickVisit' delay feature prevents fan from running should light be switched On/Off again within 2mins
- Built-in run-on period after light switched Off. User adjustable from 30s-20mins
- Neon indicator

### Premier LVCF20

Ref. 91041AW

- High performance condensation control centrifugal unit
- Integral condensation controller
- Stylish 2 piece fascia
- User adjustable humidistat (50-90% RH)
- Room size selector matches extract performance for improved efficiency
- Trickle ventilation facility
- Automatic or pullcord manual override
- Includes external wall grille
- Neon indicator

### Premier LVCF20T

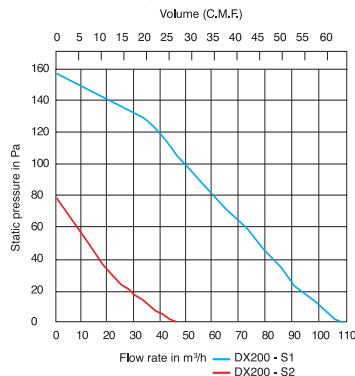
Ref. 91042AW

- High performance condensation control centrifugal unit with timer (30s-20mins)
- Integral condensation controller
- Stylish 2 piece fascia
- User adjustable humidistat (50-90% RH)
- Room size selector matches extract performance for improved efficiency
- Operated by remote switch eg. lighting circuit
- Trickle ventilation facility
- Automatic or pullcord manual override
- Neon indicator
- Includes external wall grille

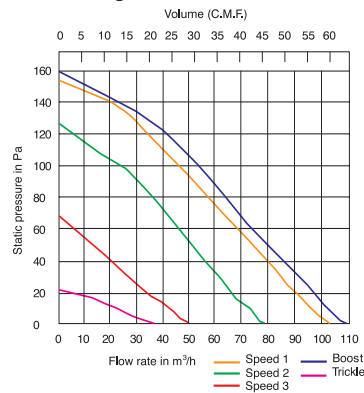
**Typical Specifications** on page 160.  
**Wiring Diagrams** on page 180.  
**Remote Sensors** on page 56.

## Performance

### LVDX200 Range

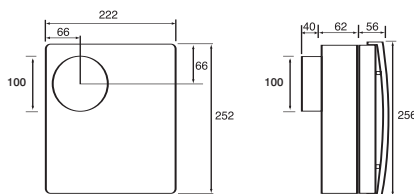


### LVCF20 Range

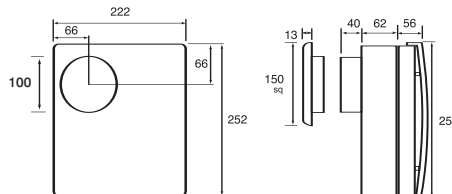


## Dimensions (mm)

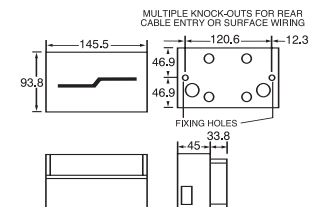
### LVDX200 Range



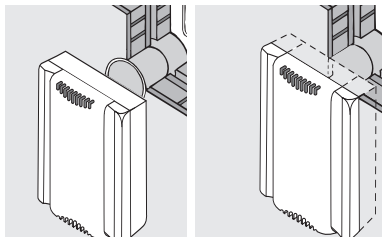
### LVCF20 Range



### LV transformer



## Installation and Accessories



Wall Mounting

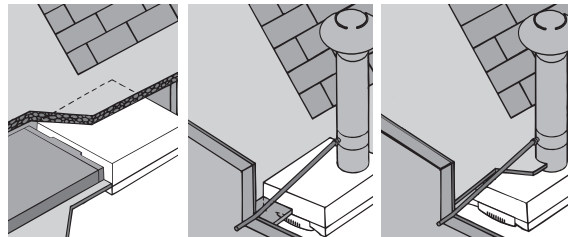
Flush Wall Mounting

Hole diameter: 117mm

### Installation Accessories

Wall tube WD100  
Wall vent kit VK10

Ref. 89543AA  
Ref. 89120AW



Ceiling Mounting  
with flat ducting

Flush Ceiling  
Mounted

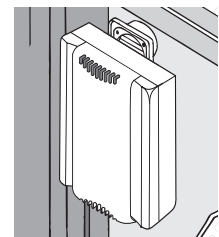
Surface Ceiling  
Mounted

Hole diameter: 117mm or (w 203 x h 233mm flush mounted)

### Installation Accessories

Flat ducting XFP  
Flexible ducting FD100  
Condensation trap XCT100  
Vent cowl VC10  
Flat duct adaptor FDA  
Ceiling mounting adaptor XCMK

see **Profile 29**  
Ref. 89910AA  
Ref. 89749AA  
Ref. 89531AW  
Ref. 90547AA  
Ref. 90066AA



Window Mounting

Hole diameter: 120mm

### Installation Accessories

Glass mounting kit GMK  
Ref. 90546AA