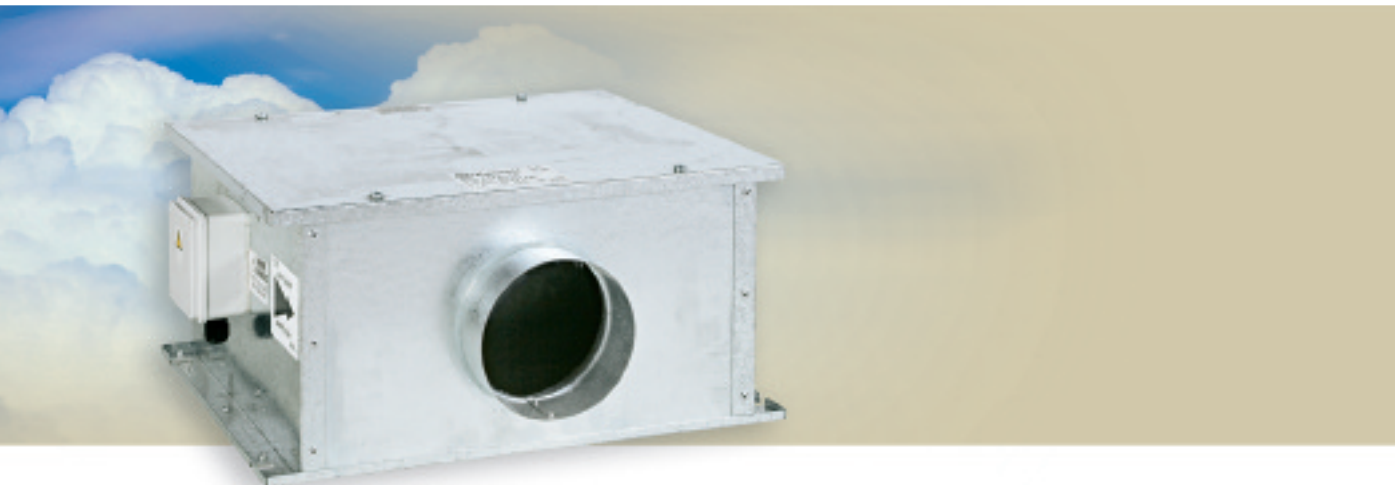


Xpelair HiFlo CMAX XSFA

Attenuated inline fans



Key features

Type:	Attenuated inline
Application:	Commercial/Industrial
Control options:	Electronic/Transformer speed control



The Range

The Xpelair HiFlo **XSFA** range of attenuated inline fans is a nine model line up of fans for use in ducting applications where high performance and low sound levels are required.

Suitable for light commercial and industrial applications such as schools, shops, sports complexes, offices, pubs and restaurants, the compact design of the range allows the fans to easily be accommodated above a suspended ceiling or floor void using the mounting points provided.

The high performance, low noise level motor, combined with a cabinet lined with fire rated sound absorbing material makes **XSFA** units particularly suitable where low sound operating levels are critical.

All models can be mounted with the cover upwards or inverted.

The HiFlo range is suitable for ambient temperatures from -30°C to $+50^{\circ}\text{C}$ and an optional range of speed controllers and sensors are available.

Models

- High performance pressure developing inline fan suitable for extract or input applications using circular ductwork
- Fan housing manufactured in G.S.M with acoustic sound absorbing material to Class 0 fire rated to BS 476 parts 6 and 7 to minimise noise break-out
- 50mm deep connection spigots
- Insulation class B & F
- Motors - Direct drive, double inlet, forward curved centrifugal fan / scroll assembly
- Continuously rated capacitor start and run motor with sealed for life bearings and safety thermal overload protection
- Metal impeller balanced to ISO 1940 – 1 : 1986 grade G 6.3
- IP54 terminal box
- Fans are easily disconnected from a mounting plate for cleaning
- Integral fixing slots (23 x 11mm) on each side of cabinet
- Supply voltage: 220-240V 50Hz

Select the right product for your application

	XSFA100	XSFA125	XSFA150	XSFA200	XSFA250	XSFA315/1	XSFA315/2	XSFA400/1	XSFA400/2
Reference number	91389AA	91390AA	91391AA	91392AA	91393AA	91394AA	91395AA	91396AA	91397AA
Spigot diameter (mm)	100	125	150	200	250	315	315	400	400
Extract performance (m ³ /s)	0Pa	0.07	0.13	0.19	0.24	0.54	0.56	0.70	1.05
	50Pa	0.07	0.12	0.19	0.23	0.51	0.53	0.68	1.02
	100Pa	0.06	0.12	0.18	0.21	0.46	0.49	0.66	0.99
	150Pa	0.06	0.11	0.17	0.19	0.40	0.43	0.64	0.95
	200Pa	0.05	0.11	0.16	0.18	0.30	0.33	0.60	0.91
	250Pa	0.05	0.10	0.14	0.15	0.03	0.03	0.56	0.85
	300Pa	0.04	0.08	0.11	0.12			0.47	0.75
	350Pa		0.05	0.07	0.07			0.17	0.58
400Pa		0.00	0.01	0.01				0.01	
Nominal fan speed (rpm)	2150	1150	1150	1150	1300	1300	1100	1100	1210
Sound pressure level (dB(A)@3m)	41	32	33	34	40	41	42	44	51
Motor electrical power (W)	88	195	195	195	360	360	700	700	1240
Electrical current FLC (A)	0.4	1	1	1	1.6	1.6	3	3	6
Electrical current SC (A)	1	3	3	3	4.5	4.5	7.5	7.5	16
Motor insulation class	B	B	B	B	F	F	B	B	F
Weight (kg)	14	14	15	15	26	32	35	40	45
5 step transformer speed controller	91376AA	91367AA	91367AA	91367AA	91368AA	91368AA	91368AA	91368AA	91370AA
Guarantee (years, UK)	2	2	2	2	2	2	2	2	2

Controllers

Inline Fan Controller XIC1

Ref. 21858AW

- Slide switch provides On/Off control. Adjustable speed control for infinitely variable speeds. Complete with power 'On' indicator light

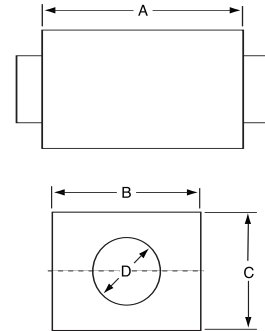
5 Step Transformer Speed Controller

- Multi-tapped auto transformer giving 5 speeds allowing accurate adjustment to suit site conditions
- Provides five speed and On/Off function
- Robust ISO casing
- IPX4 protected

Typical Specifications on page 179.
Remote Sensors on pages 154.

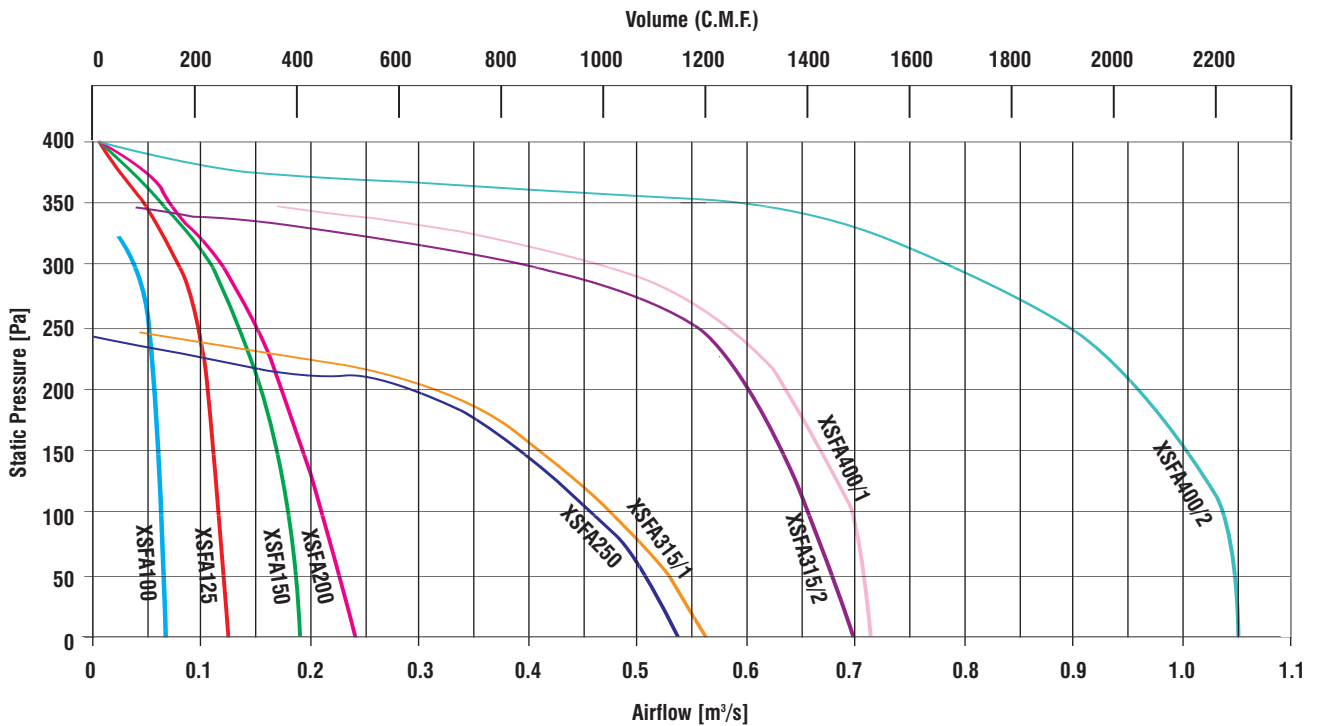


Dimensions (mm)



Model	Dimensions (mm)			
	A	B	C	ØD
XSFA100	450	515	250	100
XSFA125	450	515	250	125
XSFA150	450	515	250	150
XSFA200	450	515	250	200
XSFA250	600	915	450	250
XSFA315/1	600	915	450	315
XSFA315/2	600	915	450	315
XSFA400/1	600	915	450	400
XSFA400/2	600	915	450	400

Performance



Installation

